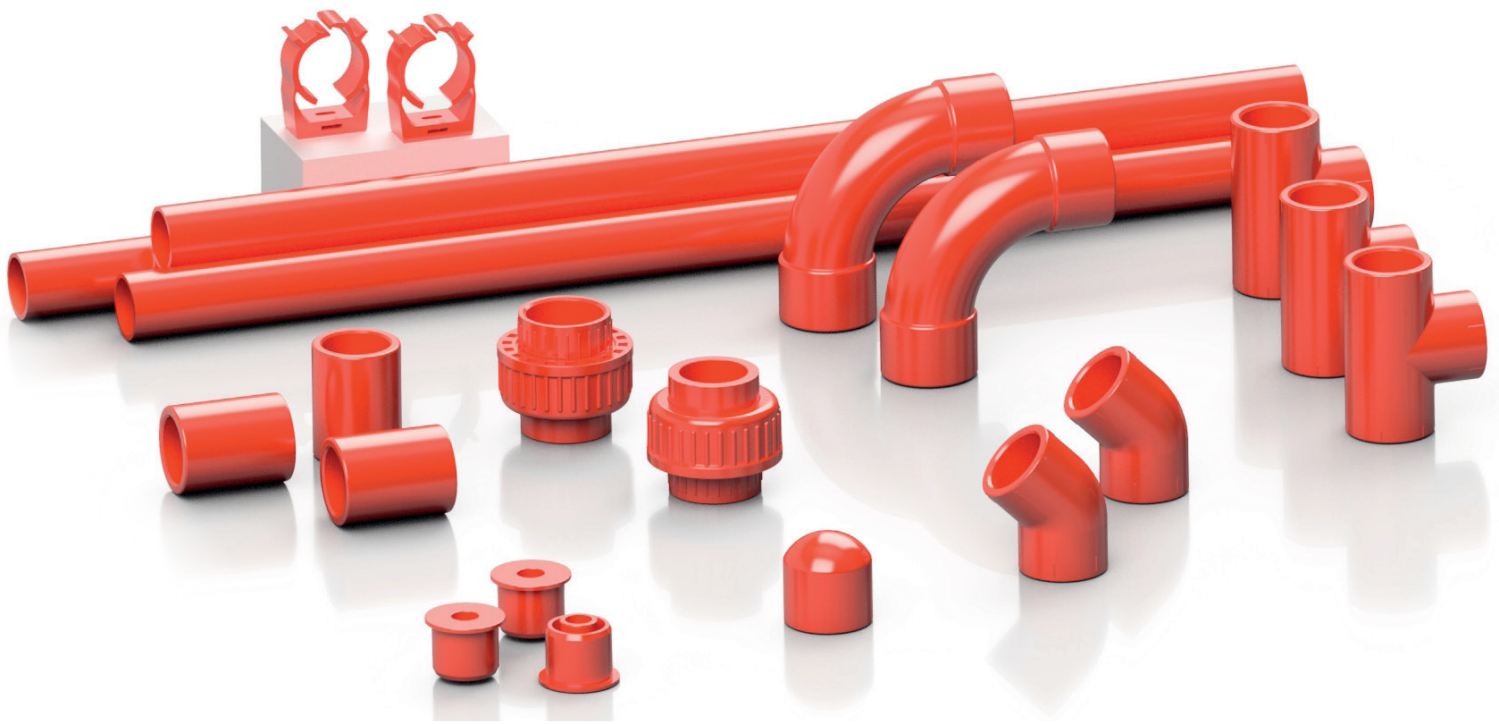




# RED ABS Fittings

## *ABS ROSSO Raccordi*





# Welcome to Effast

Effast by Genuit is a well-established brand name that is recognised throughout both the industrial process market and construction industries for its market-leading range of thermoplastic pipework systems suitable for use within industrial applications.

Manufactured in Cicagna North Italy, the company now provides these components to customers all over the world and leads the way in the research and development of advanced new solutions that satisfy the specific needs of the market.

Supported by its large UK based manufacturing capabilities, Polypipe has developed Effast's comprehensive product portfolio such that it now offers a proven and effective solution to virtually any requirement. No matter what the project, the Effast range can offer the perfect combination of pressure pipe fittings, ball, butterfly, diaphragm and actuated valves, compression joints, adaptors and other fittings. Normally available in both metric and imperial dimensions these products are suited to many different applications in such areas as; food and beverage processing, chemical manufacture, water treatment, marine, spa and swimming pools, building technology and agriculture.

Outstanding performance and reliability have come to represent the hallmarks by which Effast products are recognised and with these products carrying accreditation and conforming to various European standards they can be specified with complete confidence. In addition, our manufacturing facilities in Italy are certified under the relevant ISO accreditations so you can be assured you'll receive not only outstanding performance, but outstanding quality too.

Dedicated to supporting its customers at every stage the company also complements its products and systems with full technical information and support service, while a nationwide distribution network means that products are readily available, even when needed next day. Get in touch and find out how we can support you on your next project.

## EFFAST – Performance Under Pressure

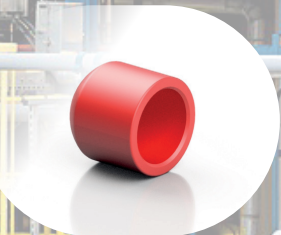
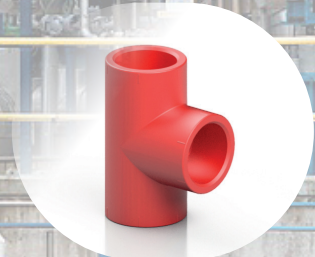
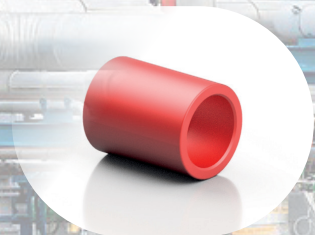


ISO 9001:2015  
ISO 14001:2015  
ISO 45001:2018



\*see back page for contact details

\*For more information on all the relevant accreditations, please visit our website [www.ffmpeg.com](http://www.ffmpeg.com)





# Raw material data / *Dati sulla materia prima*

## Acrylonitrile Butadiene Styrene / *Acrilonitrile Butadiene Stirene*

RED ABS (Acrylonitrile Butadiene Styrene) is highly rated as a thermoplastic pipework system and is used for smoke detection system.

RED ABS has good chemical resistance with high impact strength and low moisture absorption.

RED ABS systems are lightweight, rigid and easy to install using a solvent cement.

Temperature range: -40 °C ÷ +60 °C.

*I sistemi di tubazioni termoplastici in ABS ROSSO (acrilonitrile-butadiene-stirene) vengono utilizzati principalmente per la rilevazione dei fumi.*

*L'ABS ROSSO oltre al basso assorbimento di umidità possiede sia una buona resistenza chimica che un'elevata resistenza agli urti.*

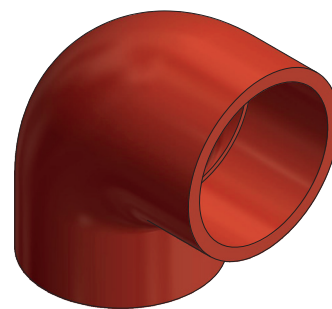
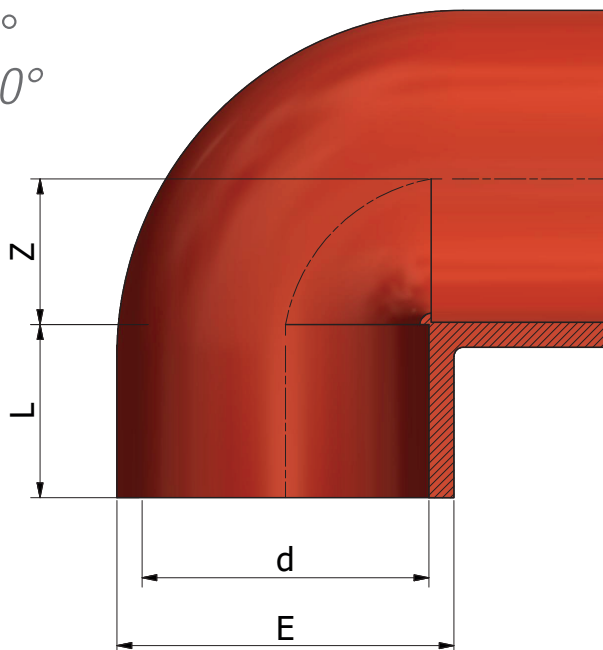
*I sistemi in ABS ROSSO sono leggeri, rigidi e facili da installare mediante incollaggio.*

*Range di temperatura: -40 °C ÷ +60 °C.*

Properties	ISO Test Method	Test condition	unit	General PA-709
Melt Flow Index	1133	220 °C 10 Kg	ml/10 min	5
Mass Density	1183	23 °C	g/cm <sup>3</sup>	1.03
Ball Indentation Hardness	2039-1	H358/30	N/mm <sup>2</sup>	86
Tensile Strength	527	50 mm/min,yield	MPa	40
		50 mm/min,break	MPa	32
Tensile Elongation	527	50 mm/min	%	55
Flexural Strength	178	2 mm/min	MPa	58
Flexural Modulus	178	2 mm/min	GPa	1.8
Izod Impact Strength	180/1A	Notched	Kj/m2	37
	180/1C	Unnotched		-
Charpy Impact Strength	179	Notched	Kj/m2	41
Impact Flexural Test	179/2C	Notched	Kj/m2	25
	179/2D	Unnotched		-
Vicat Softening Temp.	306	1 Kg,50 °C/hr	°C	103
		5 Kg,50 °C/hr		94
		1 Kg,120 °C/hr		104
		5 Kg,120 °C/hr		95
Heat Distortion Temp. / A	75	1.8 MPa Unannealed	°C	88
		1.8 MPa Annealed		98
UL Flammability	-	UL-94	-	1.5 mm HB

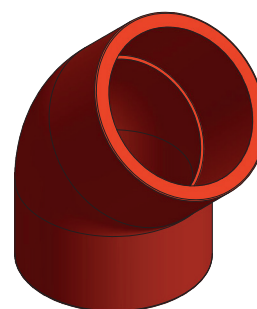
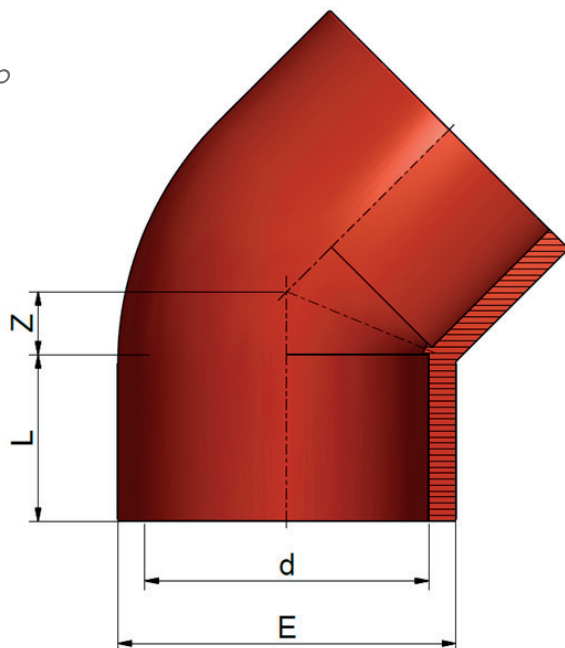
RED ABS Solvent welded BS fittings 3/4" or solvent welded metric 25 mm  
*ABS ROSSO Raccordi per incollaggio BS 3/4" o incollaggio metrico 25 mm*

Elbow 90°  
*Gomito 90°*



Code	d	L	Z	E	PN	Weight
RAAGOA025R	3/4"	20	14	33	16	20
RDAGOD025R	25	19	13	33	16	20

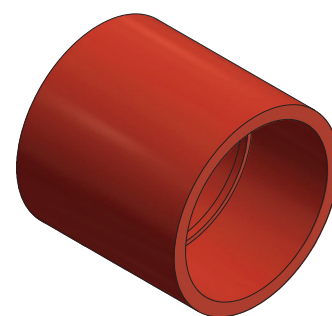
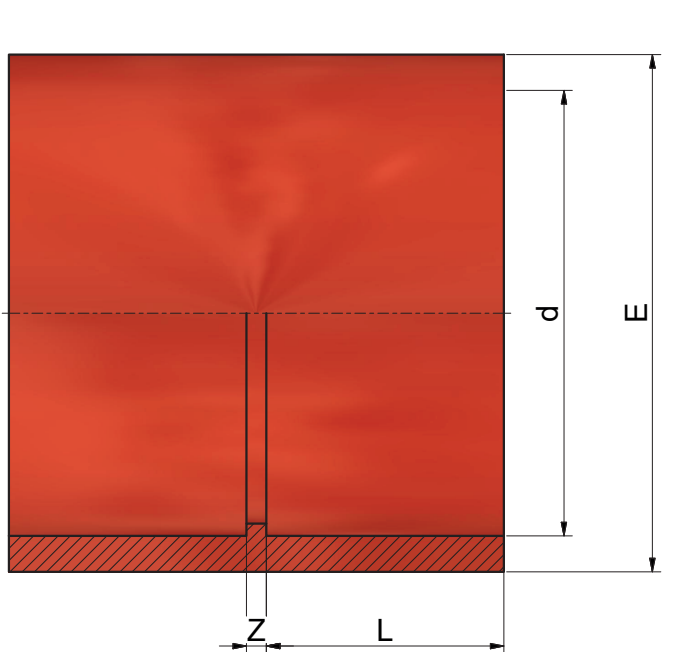
Eblow 45°  
*Gomito 45°*



Code	d	L	Z	E	PN	Weight
RAAGYA0250R	3/4"	20	6	33	15	16
RDAGYD0250R	25	19	7	33	16	16

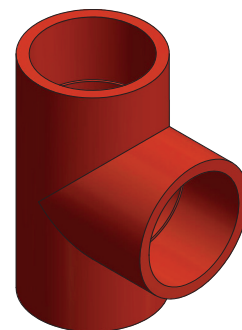
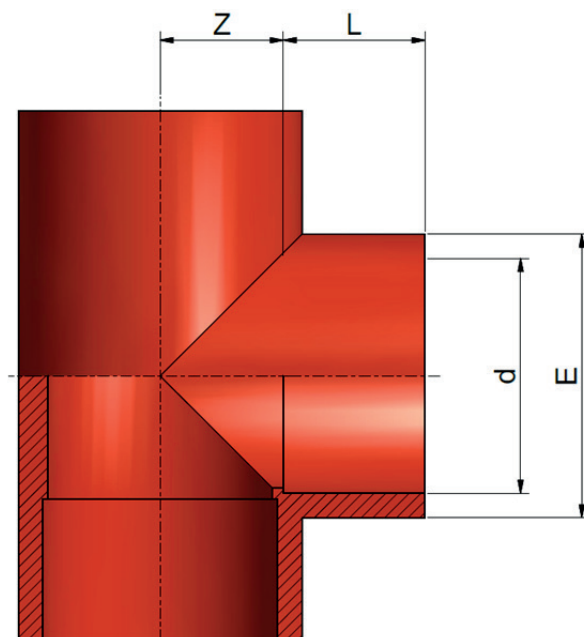
RED ABS Solvent welded BS fittings 3/4" or solvent welded metric 25 mm  
*ABS ROSSO Raccordi per incollaggio BS 3/4" o incollaggio metrico 25 mm*

Socket  
*Manicotto*



Code	d	L	Z	E	PN	Weight
RAAMAA0250R	3/4"	20	3	33	15	13
RDAMAD0250R	25	19	4	33	16	13

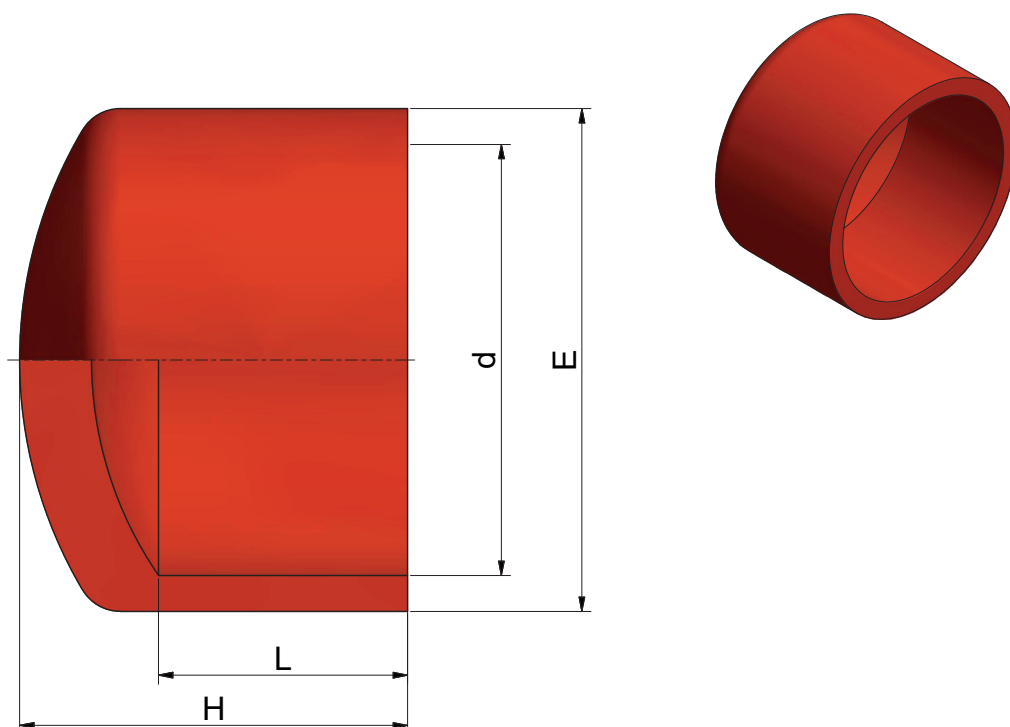
Tee 90°  
*Ti 90°*



Code	d	L	Z	E	PN	Weight
RAATIA0250R	3/4"	20	14	34	15	20
RDATID0250R	25	19	14	33	16	20

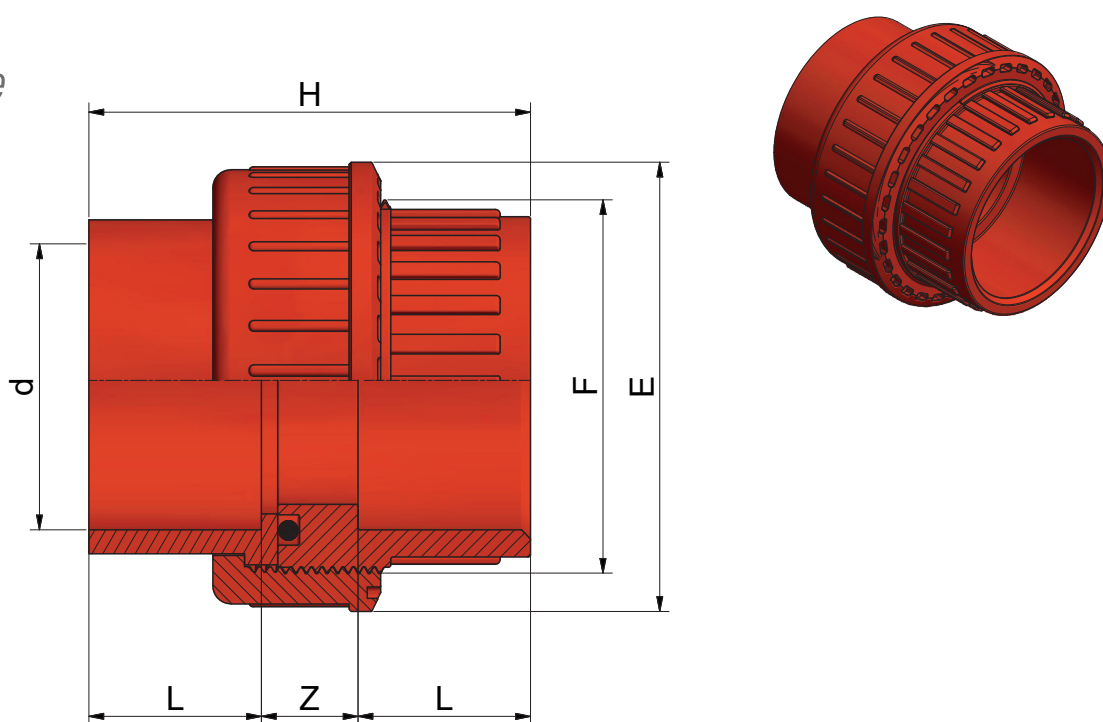
RED ABS Solvent welded BS fittings 3/4" or solvent welded metric 25 mm  
*ABS ROSSO Raccordi per incollaggio BS 3/4" o incollaggio metrico 25 mm*

End cap  
*Calotta*



Code	d	L	Z	E	PN	Weight
RAACAA0250R	3/4"	20	34	33	15	12
RDACAD0250R	25	19	31	33	16	12

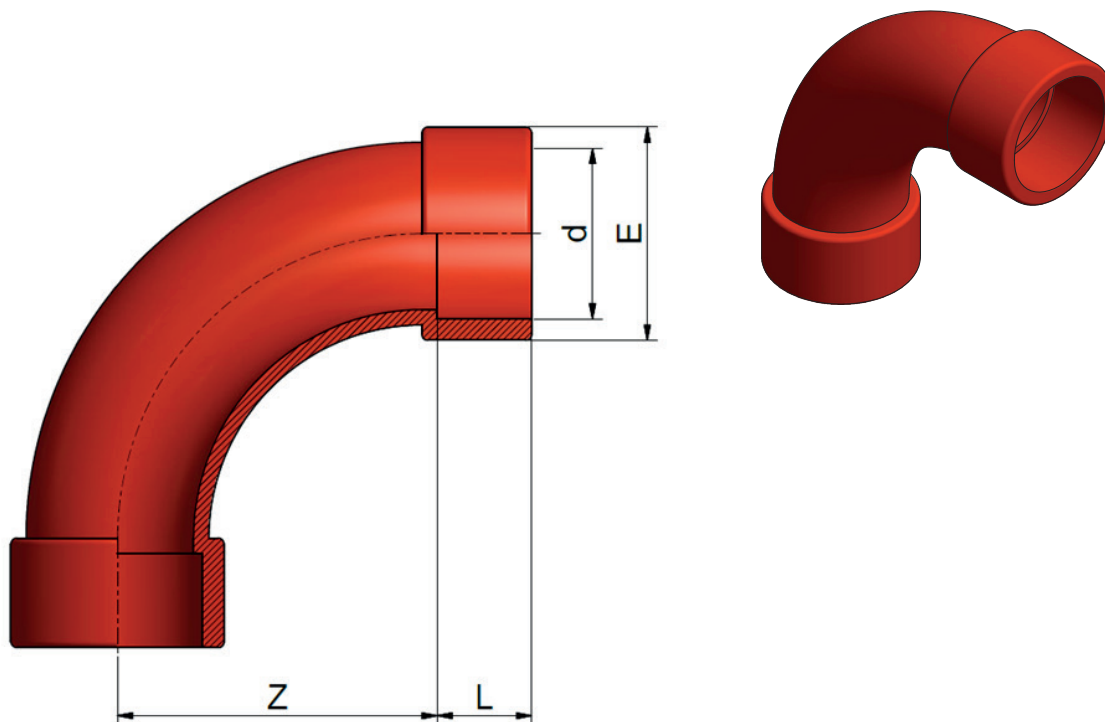
Union  
*Bocchettone*



Code	d	L	Z	E	H	F	PN	Weight
RAABOA0250R	3/4"	19	13	51	54	1 1/4"	15	67
RDABOD0250R	25	19	13	51	54	1 1/4"	16	68

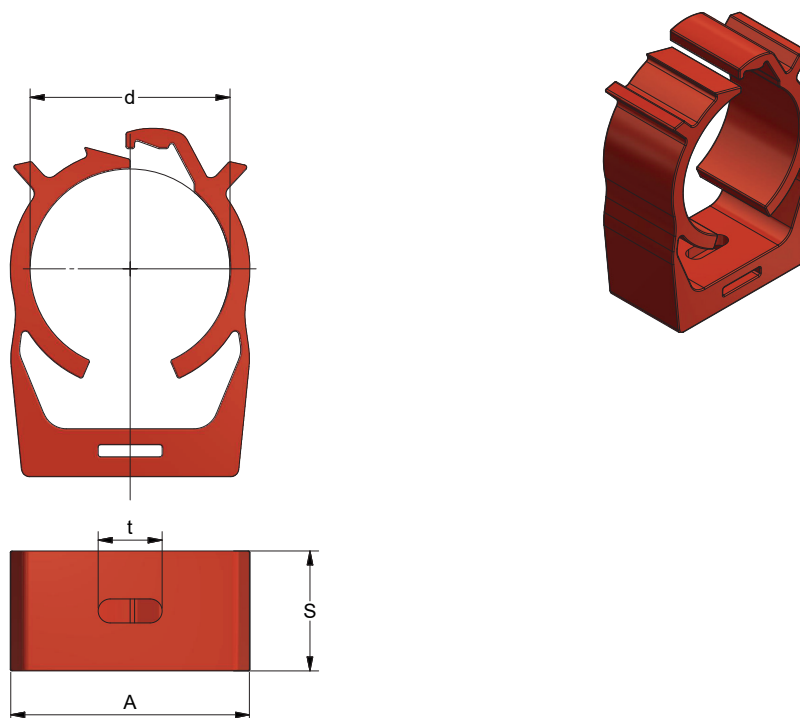
RED ABS Solvent welded BS fittings 3/4" or solvent welded metric 25 mm  
*ABS ROSSO Raccordi per incollaggio BS 3/4" o incollaggio metrico 25 mm*

Bend 90°  
*Curva 90°*



Code	d	L	Z	E	PN	Weight
RAACUA0250R	3/4"	20	49	33	15	55
RDACUD0250R	25	19	50	35	16	55

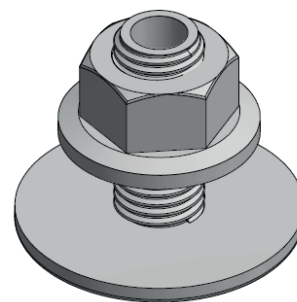
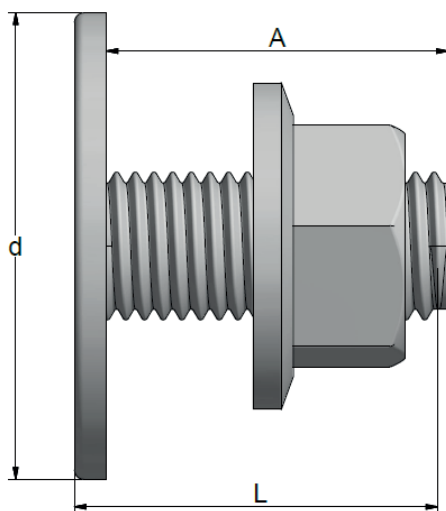
Pipeclip  
*Portatubo*



Code	d	A	S	t	PN	Weight
RHPPTH025R	25	30	15	8	15	8.5

# RED ABS Solvent welded BS fittings 3/4" or solvent welded metric 25 mm ABS ROSSO Raccordi per incollaggio BS 3/4" o incollaggio metrico 25 mm

## Flush head Attacco



Code	d	L	A	Weight
RAACAA0250R	50	38.9	36.6	17

## ABS Solvent jointing procedure / Procedura di incollaggio per ABS

- Always use personal protective equipment, gloves, and eye protection / Utilizzare sempre dispositivi di protezione individuale, guanti e protezione per gli occhi.
- Always carry out work in a well ventilated area / Eseguire sempre il lavoro in un'area ben ventilata.
- Always refer to material safety data sheets / Fare sempre riferimento alle schede di sicurezza dei materiali.
- Dispose of waste responsibly / Smaltire i rifiuti responsabilmente.
- Failure to follow the jointing procedure may invalidate any warranties given / Il mancato rispetto della procedura di incollaggio può invalidare le garanzie prestate.

- 1- Cut the pipe at right angles to its axis and to the required length, deburr the cut end of the pipe with a sharp knife or scraper / Tagliare il tubo ad angolo retto rispetto al suo asse e alla lunghezza richiesta, sbavare l'estremità tagliata con un coltello affilato o un raschietto.
- 2- Chamfer the leading edge of the pipe at approximately 15° to 30°. This will prevent the solvent cement being wiped from both the pipe and fitting when mated together / Smussare il bordo anteriore del tubo a circa 15° - 30° in modo tale da impedire che la colla venga rimossa dal tubo o dal raccordo durante il loro accoppiamento.
- 3- Mark the pipe back from the chamfered end to a length equal to the socket depth plus 5 mm. This mark will act as a virtual indicator to show that the pipe is fully inserted into the socket / Fare un segno sull'estremità del tubo smussata ad una lunghezza pari alla profondità del raccordo più 5 mm. Questo segno servirà come indicatore virtuale per mostrare che il tubo è completamente inserito nel raccordo una volta terminato l'incollaggio.
- 4- Roughen the pipe surface (up to the indicator mark) and the inside of socket with abrasive cloth or paper. Do not roughen the pipe and the fitting to the extent that the clearance between them is noticeably increased / Irruvidire la superficie del tubo (fino al segno) e l'interno del raccordo con tela o carta abrasiva senza esagerare, evitando così di aumentare troppo il gioco tra i due.
- 5- Clean the inner surface of the socket and the surface of the pipe up to the mark using a lint free cloth or absorbent paper dampened with Effast solvent cleaner / Pulire la superficie interna del raccordo e la superficie del tubo fino al segno utilizzando un panno privo di lanugine o carta assorbente inumidita con un detergente a base di solvente Effast.
- 6- Apply the cement straight from the tin and ensure that all relevant surfaces are covered / Applicare la colla direttamente dal barattolo e assicurarsi che tutte le superfici rilevanti siano coperte.
- 7- Push fittings/pipe together without twisting and ensure that they are aligned and fully engaged (the indicator mark should be in line with the edge of the socket) then hold the assembly for a short time / Inserire il tubo nel raccordo senza ruotarlo, assicurarsi che i due siano allineati e completamente uniti (il segno dell'indicatore dovrebbe essere in linea con il bordo del raccordo), quindi tenere il tutto insieme per un breve periodo di tempo.

d Pipe	holding time	d Pipe	holding time	d Pipe	holding time	d Pipe	holding time
3/8"-2" / 16mm-63 mm	30 sec	2"1/2-4" / 75mm-110 mm	45 sec	5"-8" / 140 mm-225 mm	1 min	10"-12" / 250 mm-315 mm	2 min

"All descriptions and illustrations in this publication are intended for guidance only and shall not constitute a 'sale by description'. All dimensions given are nominal, while changes can be done on the information, products and specifications from time to time for a variety of reasons, without prior notice. The information in this publication is provided 'as is' on the revision date stated on the sheet. Updates will not be issued automatically. This information is not intended to have any legal effect, whether by way of advice, representation or warranty (express or implied). We accept no liability whatsoever (to the extent permitted by law) if you place any reliance on this publication you must do so at your own risk. All rights reserved. Copyright in this publication belongs to Polypipe and all such copyright may not be used, sold, copied or reproduced in whole or part in any manner in any media to any person without prior consent. **EFFAST** is a registered trademark."